

# Maglin Sustainability Initiative

Year 3: 2023-24 Review







## Message from the President and CEO

This report marks another successful year for Maglin's sustainability journey. It's more than just a report; it's a testament to the dedication and growing expertise of our people. This year's achievements lay the groundwork for a more sustainable future at Maglin.

While the report details our accomplishments, it's the impact that truly resonates. Witnessing the revitalization of our Maglin Pond and the flourishing bird population firsthand fills me with immense pride. It's a tangible reminder that our efforts extend beyond numbers - they create a healthier environment for everyone.

Maglin's success wouldn't have been possible without the collaborative efforts of our employees, suppliers, and valued customers. Your unwavering support and feedback have been instrumental in driving our progress. Thank you for being a part of this journey.

Looking ahead, we recognize that sustainability is a continuous pursuit. Progress may not always be linear, but our commitment to responsible practices remains unwavering. We are excited to explore new avenues and further solidify Maglin's position as a leader in sustainable business practices.

Sincerely,

Ian McAskile  
President and CEO of Maglin Site Furniture

# Sustainability Statement

Maglin Site Furniture shapes your environment, and we want to keep it healthy. At Maglin, we understand our products become part of the natural and built environment. **We want to care for the spaces our products occupy and the people who will enjoy them for generations to come.** We have initiated our plan to shape our future actions through three overarching pillars: **People, Place, and Product.**



# People

## Rewrite Climate

“ Sustainability 101 by Rewrite Climate gave our staff a very good base level of understanding. It wasn't too scientific or heavy and everyone found it very engaging. Furthermore, the training got them excited and interested in sustainability. Our people, who are the experts when it comes to our organization, were inspired to identify opportunities for improvement as well as solutions in areas like fuel efficiency and reduced energy consumption.

*Sarah Doyle, Head of Sustainability*

The goal was to up-skill and inspire the team, and foster a company-wide understanding of Maglin's priorities. To date, 92% of Maglin staff have completed this course.



## Supporting Communities

### Maglin-LACF Scholarship

Maglin is delighted to join forces with the LACF to annually donate \$40,000, supporting eight scholarships each year from 2023 to 2025. Starting this year, a scholarship of \$5,000 will be awarded to a Canadian citizen or permanent resident who demonstrates excellence in their studies, and who is studying landscape architecture in the following programs:

- Dalhousie University, BLA
- University of Montreal, MLA
- University of Guelph, MLA
- University of Guelph, BLA
- University of Toronto, MLA
- University of Manitoba, MLA
- University of Calgary, MLA
- University of British Columbia, MLA

### Canadian Youth Climate Action Award

This award “recognizes and amplifies successful, youth-led climate-action programs/projects. Our primary focus is to support young Canadians on positive, impactful ideas and actions that help address critical climate challenges.” The top eight projects will receive funding to implement their projects, with grants ranging from \$500 to \$5,000 for the top prize.

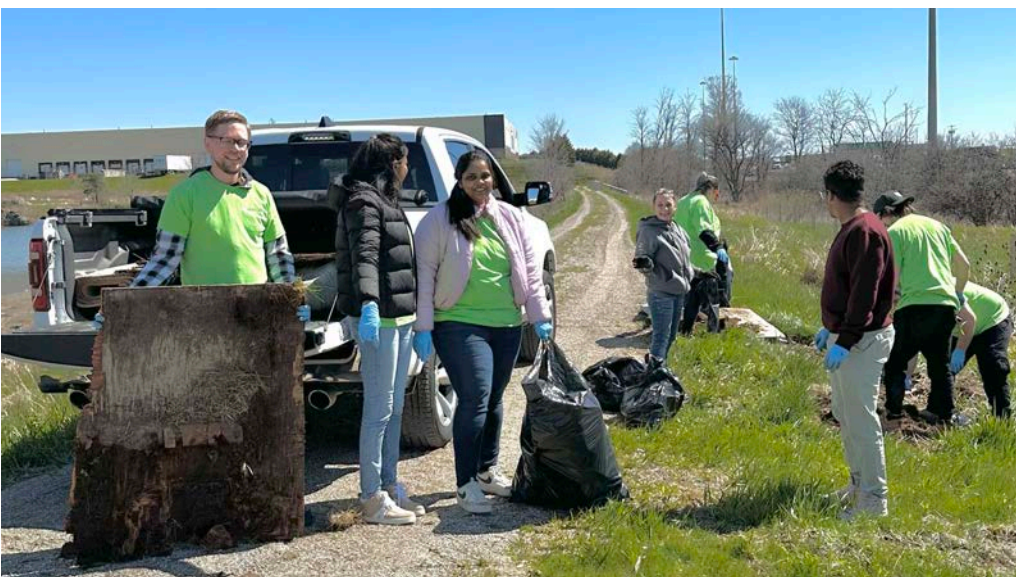




# Place

## Restoring the Maglin Pond

Maglin's facility in Woodstock, Ontario is located just north of a beautiful pond that supports a variety of bird species. In recent years, we have focused on restoring this habitat by removing the invasive Phragmites and installing a new farm fence to create a barrier between the pond and busy highway.



# Product Knowledge Sharing

This year provided many opportunities to share our Sustainability Initiative with the architect and design community, and represent Maglin's products as the durable, sustainable choice for site furniture.

## AEC Daily CEU Course

Maglin created a CEU course with the help of AEC Daily to inform architects, landscape architects, and designers about using EPDs to inform sustainable site furniture selection. This course covered the purpose of EPDs and how they are created, the benefits of using them, optimizing building certifications such as LEED and Sustainable SITES, and examples on how to use them in practice.

To access the course, visit:  
[https://www.aecdaily.com/course.php?node\\_id=2180017](https://www.aecdaily.com/course.php?node_id=2180017)

## Connecting with Customers

**Metropolis Sustainability Connect:** This was a virtual event that gave us the chance to meet designers in small groups, share how our Environmental Product Declarations (EPDs) can help them meet their sustainability goals, and answer questions about our products and materials.

**CSLA Annual Conference:** Maglin's Head of Sustainability spoke to attendees about EPDs - what are they, why are they important to landscape architects, and how to use them in practice.

**University of Calgary:** Maglin's Head of Sustainability and Alberta Territory Manager has the opportunity to meet with a Master of Landscape Architecture class in September. We spoke about material considerations, including various certifications to look out for, how recycled content reduces emissions, and the importance of durability when it comes to sustainability.

**AULA:** In March 2024, Maglin sponsored the Association of University Landscape Architects' conference, hosted by Arizona State University. We were able to participate in the campus tour and presentations from senior sustainability and facilities staff.



# Balancing Protection and Responsibility

It is important our products are packaged well on their way out the door to the customer, so they arrive in perfect condition. However, with a diverse customer base across North America, guaranteeing consistent and accessible recycling options for packaging presents a challenge.

Until the recycling systems and infrastructure across North America is more accessible and consistent, we have focused on increasing the recycled content of our packaging while remaining recyclable, and encouraging our customers to recycle at their local facilities.

**Bubble Wrap**  
**25%**  
**Recycled Content**  
Saved 385lbs of virgin plastic material

**Waste Diversion**  
**83%**  
**Diversion Rate**  
Committed to achieving a waste diversion rate above 85%

**Kraft Paper Boxes**  
**24%**  
**Recycled Content**  
Sustainable Forestry Initiative certified



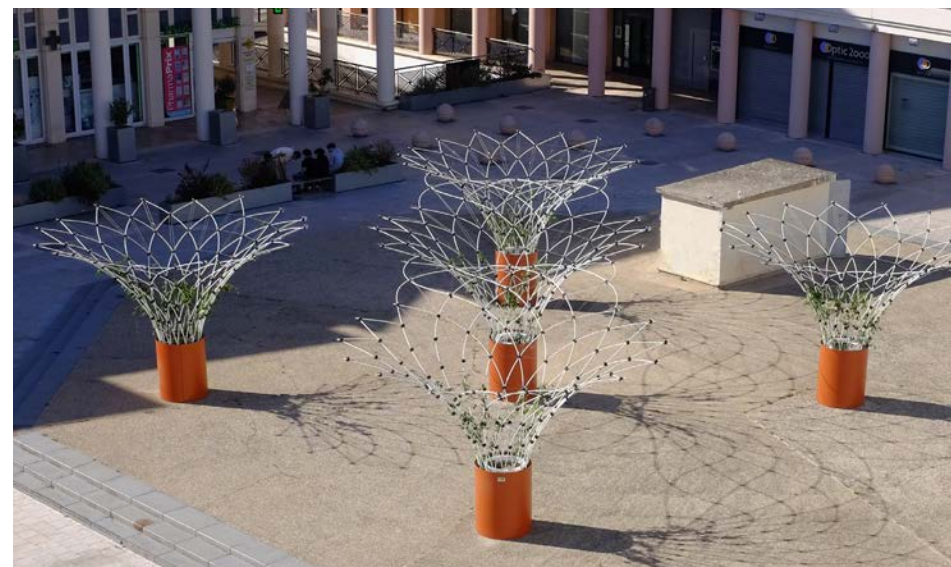


# Corolle

## Experience the future of urban cooling

Launched in April 2024, the Urban Canopee Corolle is a transformative addition to our product line, reflecting our unwavering commitment to environmental stewardship. This innovative solution tackles critical urban challenges by enhancing thermal comfort, air quality, and biodiversity.

Corolle's unique structure supports climbing plants, creating lush green canopies providing shade, reducing the urban heat island effect, and making outdoor spaces more comfortable. Additionally, the Corolle acts as a natural air filter, removing pollutants and contributing to cleaner air.





# Looking Ahead

**In the coming year, we're excited to embark on several projects that will further develop and deepen our commitment to sustainability across all three pillars. We'll be implementing projects to increase biodiversity on our site, explore new materials, and support Zero Waste initiatives in our community.**

**To address recycling challenges faced by our local customers, we're piloting a returnable packaging system. This program allows us to collect and reuse or responsibly recycle our packaging materials, minimizing waste.**

**Transparency remains a priority and we will continue to expand our Environmental Product Declaration (EPD) offerings for our new products. As always, adaptability and flexibility are key to our sustainability efforts. This lets us swiftly implement new programs that engage every team member.**



**MAGLIN**<sup>®</sup>  
Site Furniture